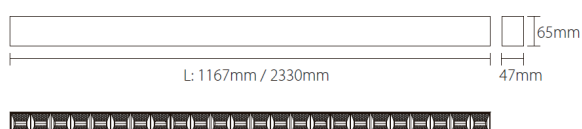


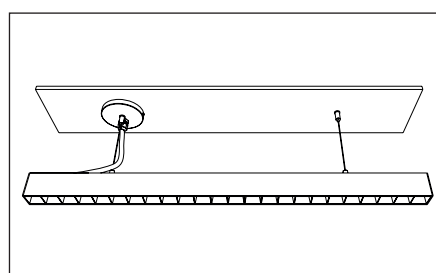
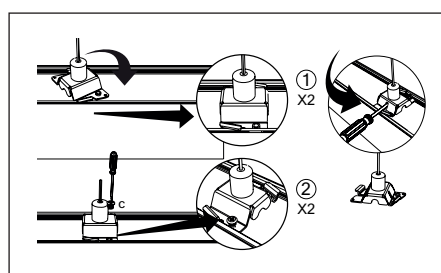
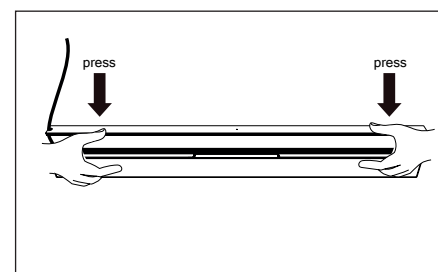
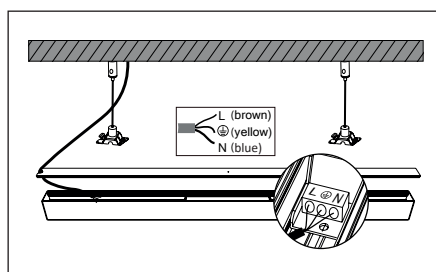
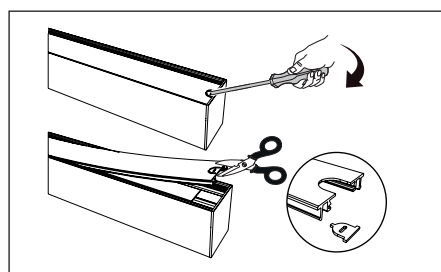
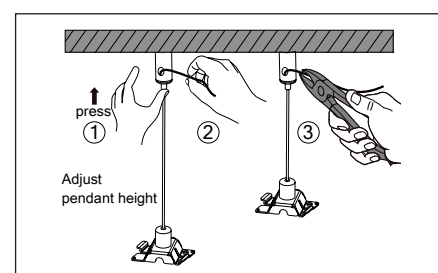
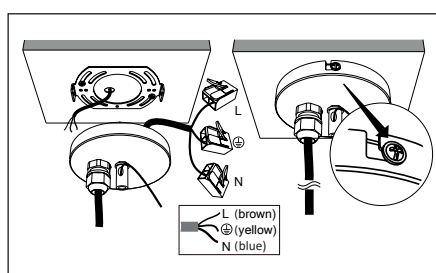
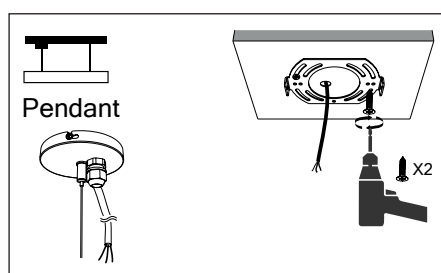
Handleiding / Anleitung / Manual

ORION LINEAR LED

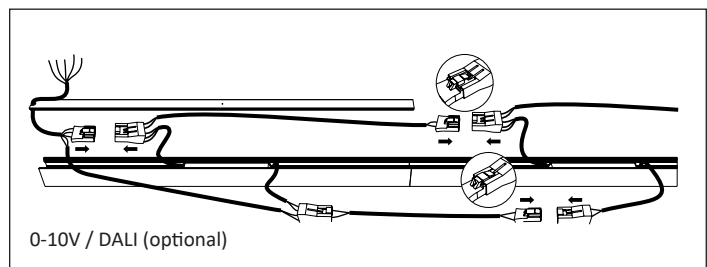
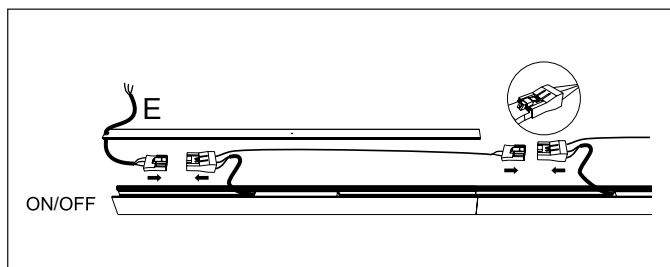
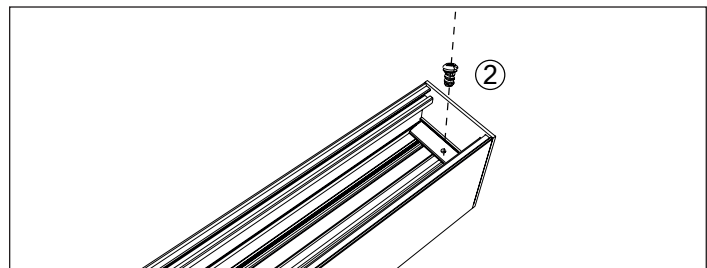
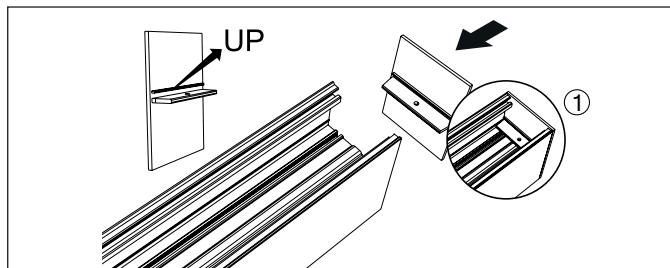
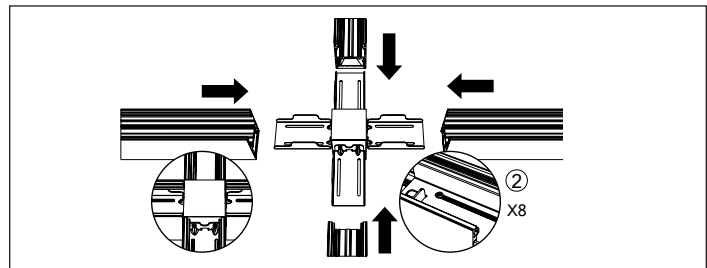
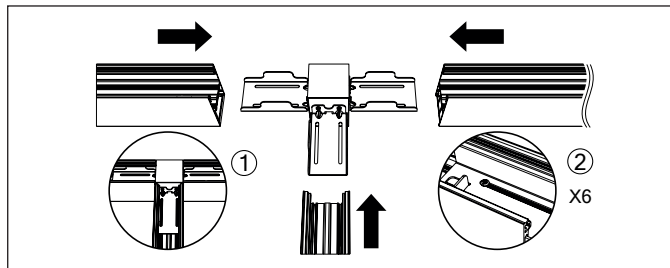
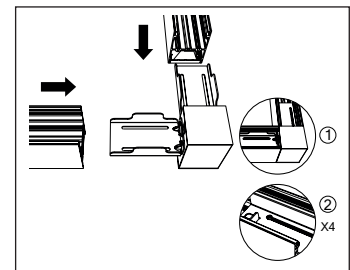
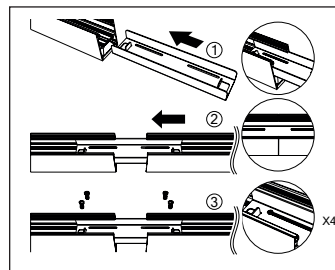
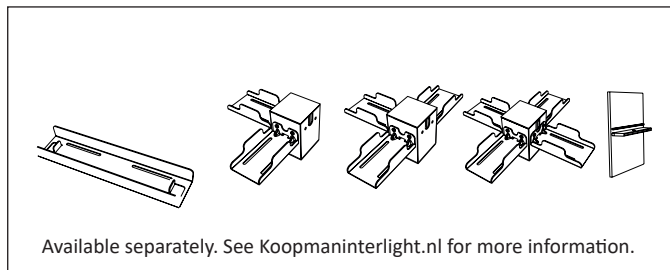


- NL** Lees voor gebruik eerst de installatie instructie en bewaar deze voor eventueel toekomstig gebruik.
- DE** Lesen Sie diese Anleitung vor Gebrauch aufmerksam durch und bewahren Sie diese für einen späteren Gebrauch gut auf.
- EN** Read this manual carefully and keep it for future use.

Installatie / Installation / Installation



Verbindingsysteem / Verbindungssystem / Connection system



Algemene informatie / Allgemeine Informationen / General information

- NL**
- Pas op voor elektrische schokken.
 - Sluit de stroom af voor installatie en onderhoud.
 - Dit product mag alleen geïnstalleerd worden door een erkend installateur.
 - Het armatuur mag niet worden afgedekt met warmteïsoleerend materiaal.

- EN**
- Beware of electric shocks.
 - Shut off the power for installation and maintenance.
 - This product may only be installed by a recognized installer.
 - The luminaire must not be covered with heat-insulating material.

- DE**
- Vorsicht vor Stromschlägen.
 - Schalten Sie die Stromzufuhr zur Installation und Wartung aus.
 - Dieses Produkt darf nur von einem anerkannten Installateur installiert werden.
 - Die Leuchte darf nicht abgedeckt werden mit wärmeisolierendes Material.



- E**
- NL** Voor meer informatie over dit product: www.koopmaninterlight.nl
Dit product bevat een lichtbron met energie-efficiëntieklasse E.
 - DE** Für weitere Informationen zu diesem Produkt: www.koopmaninterlight.nl
Dieses Produkt enthält eine Lichtquelle der Energieeffizienzklasse E.
 - EN** For more information about this product: www.koopmaninterlight.nl
This product contains a light source of energy efficiency class E.